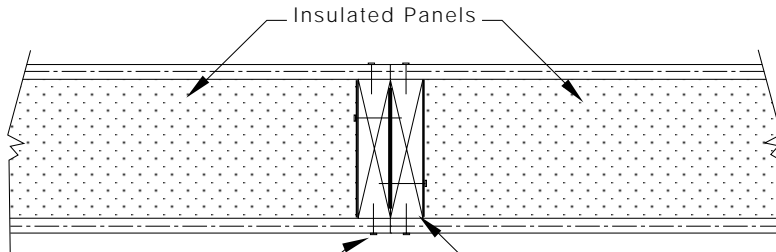


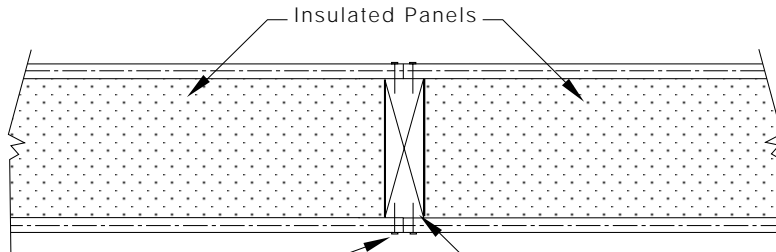
**GENERAL PANEL CORP**

General Panel Corp	
TITLE: Wall Base Plate Layout	NO.: <b>1</b>



Fasten with 1-1/4" Coarse Thread Drywall Screws or 6d Nails at 6" o.c. (Spline Fastened and Laminated before Installation)

**Double 2x Spline Connection**



Fasten with 1-1/4" Coarse Thread Drywall Screws or 6d Nails at 6" o.c.

**2x Spline Connection**

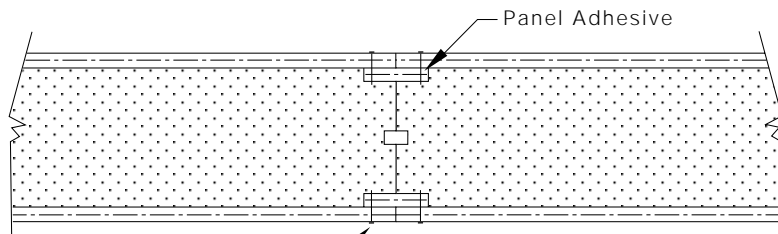
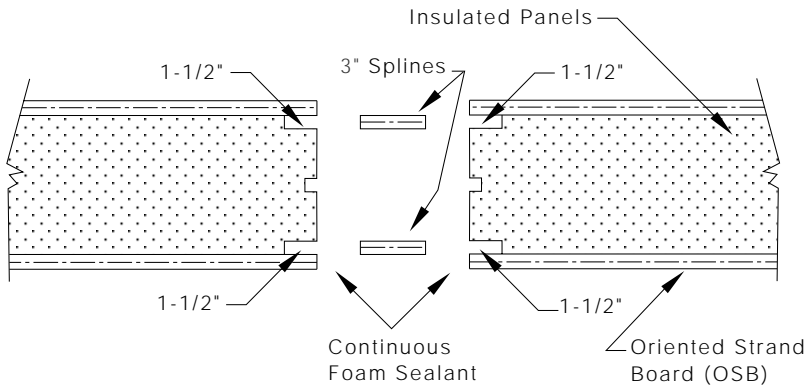
SECTION PLAN VIEW

**GENERAL PANEL CORP**

General Panel Corp

TITLE: Dimension Lumber Spline Detail

NO.: 2



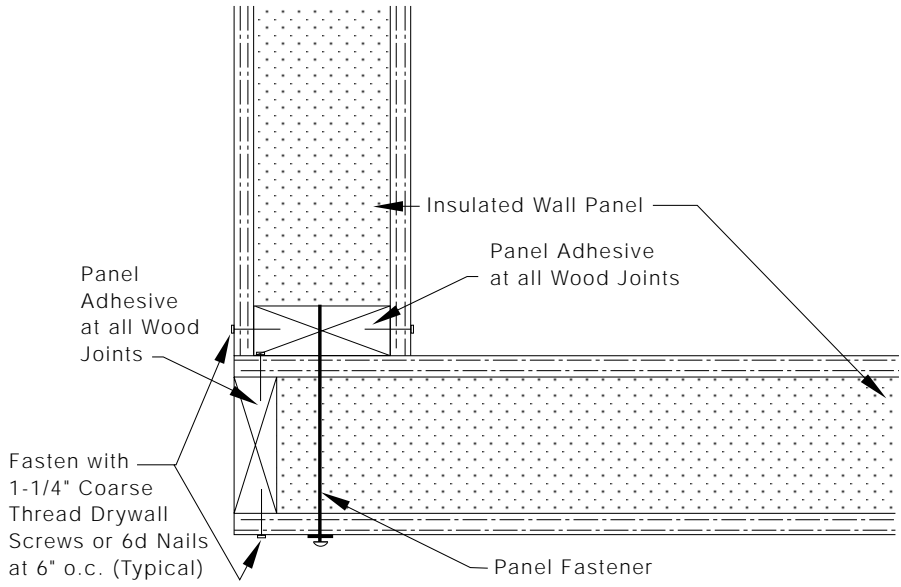
SECTION PLAN VIEW

**GENERAL PANEL CORP**

General Panel Corp

TITLE: OSB Spline Detail

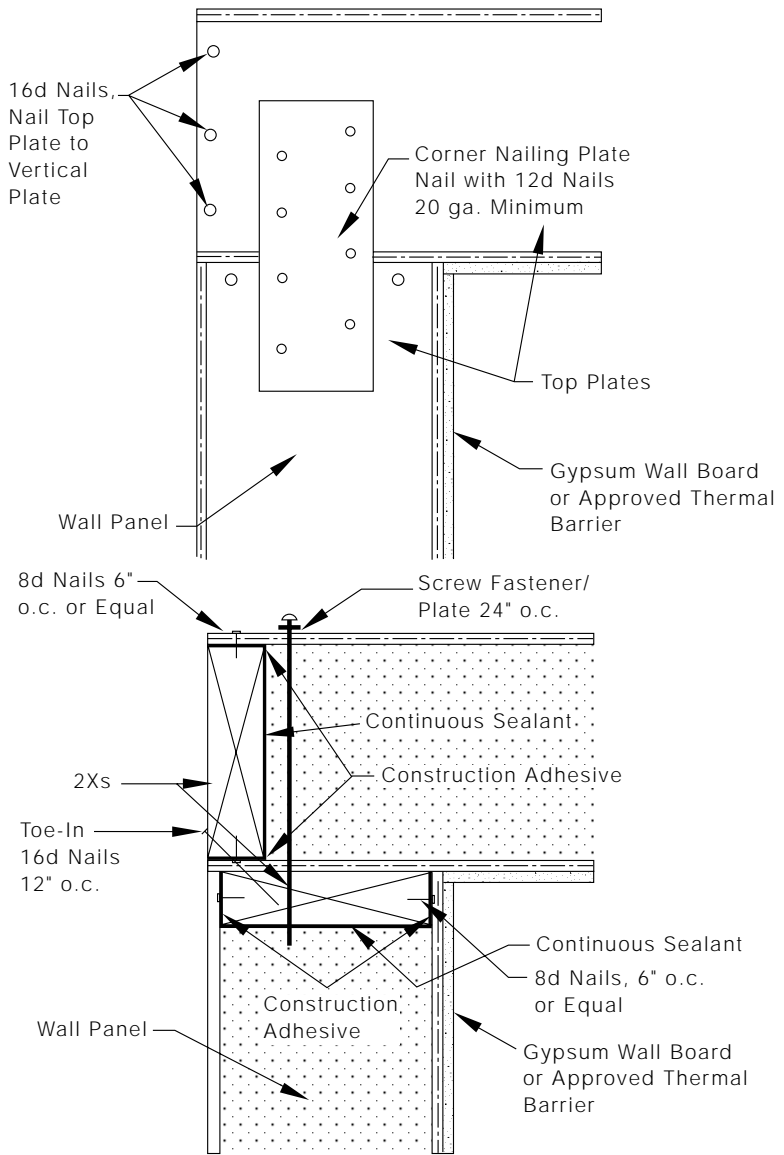
NO.: 3



SECTION PLAN VIEW

**GENERAL PANEL CORP**

General Panel Corp	
TITLE: Std. Wall Panel Corner Connection	NO.: <b>4</b>



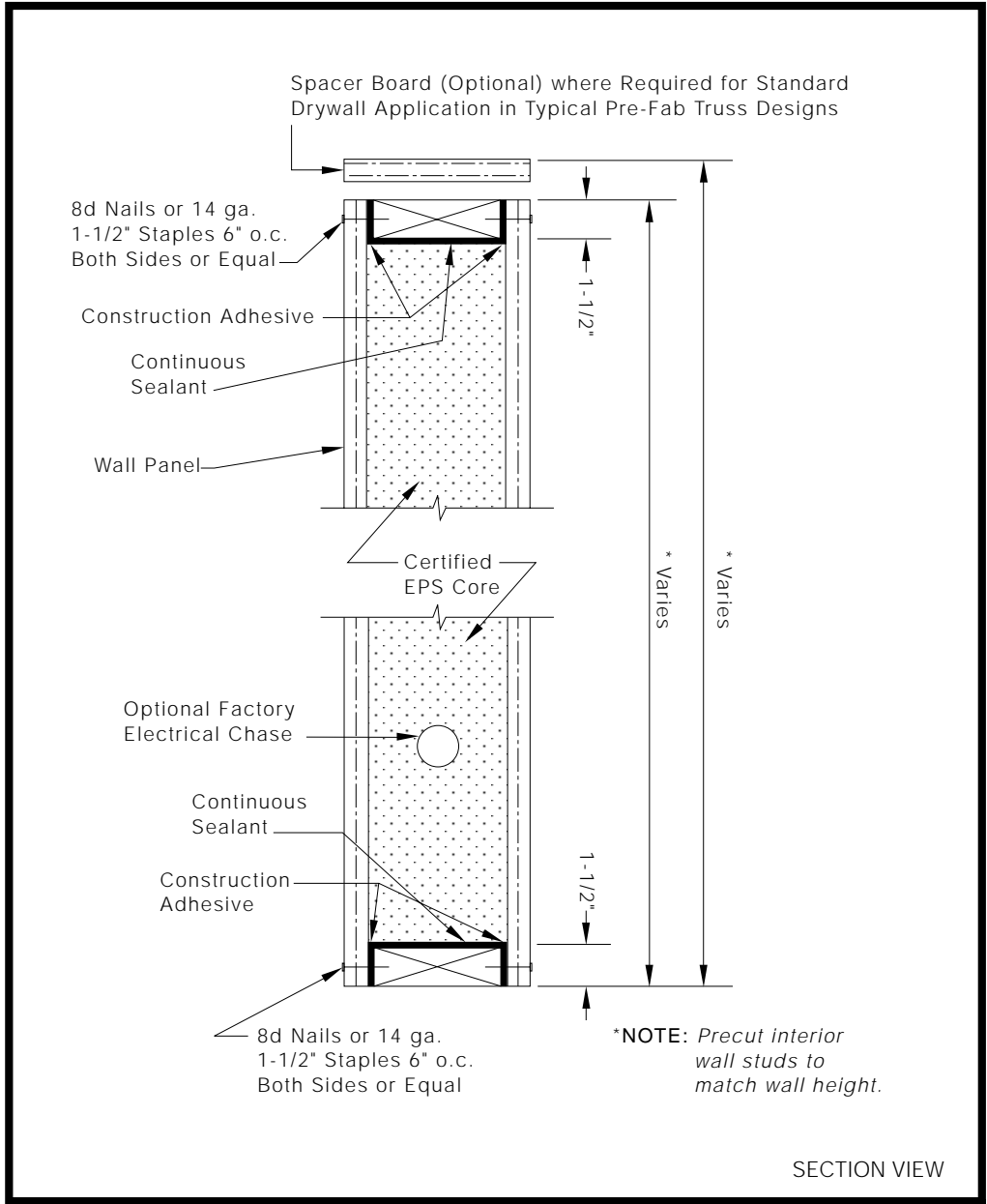
SECTION PLAN VIEW



General Panel Corp

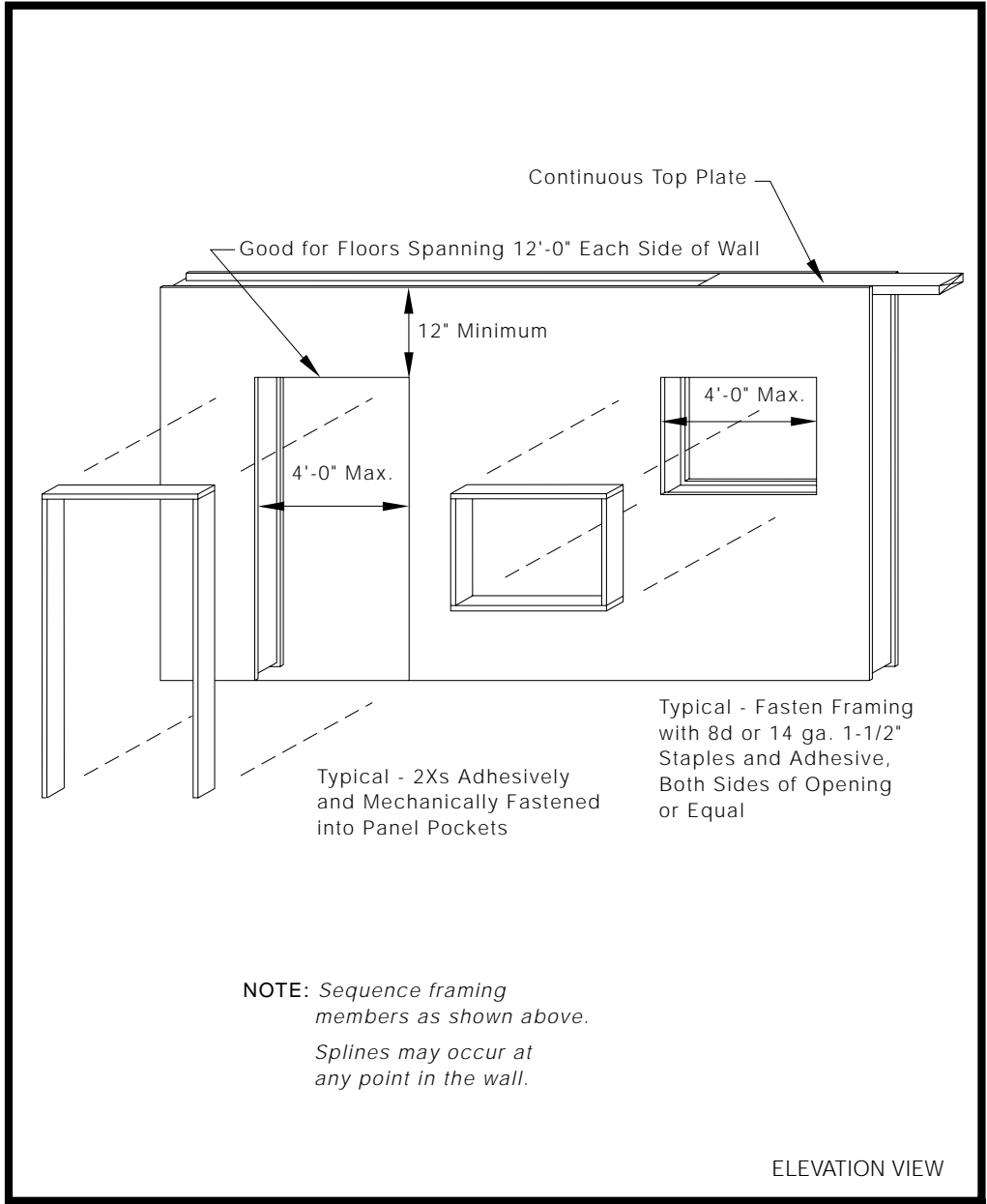
TITLE: Corner Connection-High Wind Zone

NO.: 5



**GENERAL PANEL CORP**

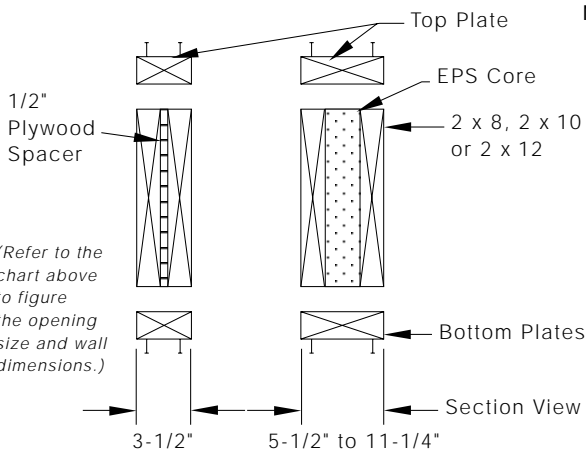
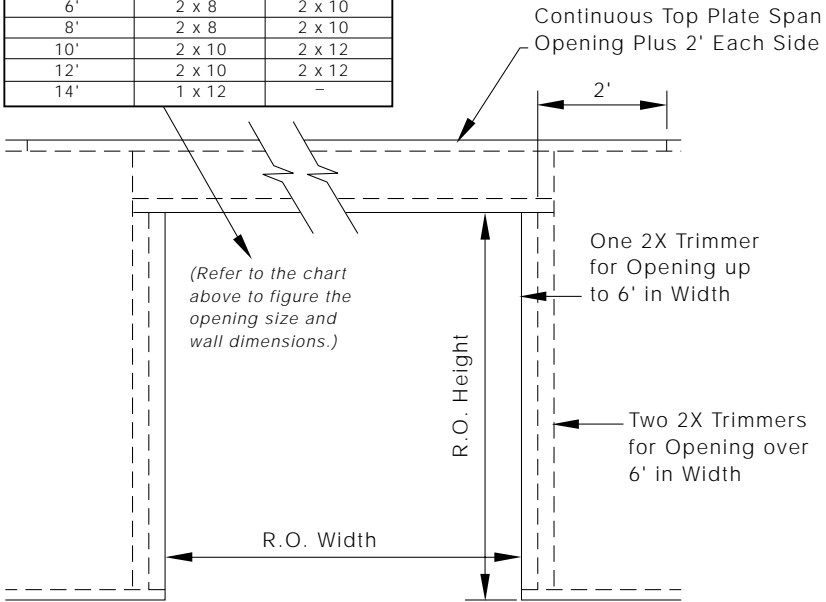
General Panel Corp	
TITLE: Wall Plate and Spacer Detail	NO.: <b>6</b>



**GENERAL PANEL CORP**

<b>General Panel Corp</b>	
TITLE: Wall Opening Details	NO.: 7

Opening Size	Exterior Wall	Interior Wall
4'	2 x 8	2 x 8
6'	2 x 8	2 x 10
8'	2 x 8	2 x 10
10'	2 x 10	2 x 12
12'	2 x 10	2 x 12
14'	1 x 12	-



**NOTE:** Header designs are for typical continuous load design. Additional engineering may be required for unusual designs and extreme load conditions.

Top and bottom plates are required as shown. Fasten with 16d Nails at 8" o.c.

Pre-engineered beams of equivalent strengths may be used.

ELEVATION VIEW

GENERAL PANEL CORP

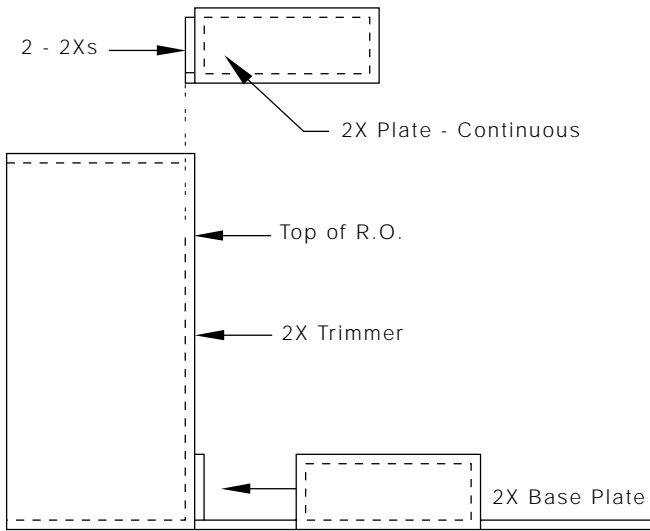
General Panel Corp

TITLE:  
Header Details

NO.:  
8



Top Plate Continuous  
Over Header and Joints



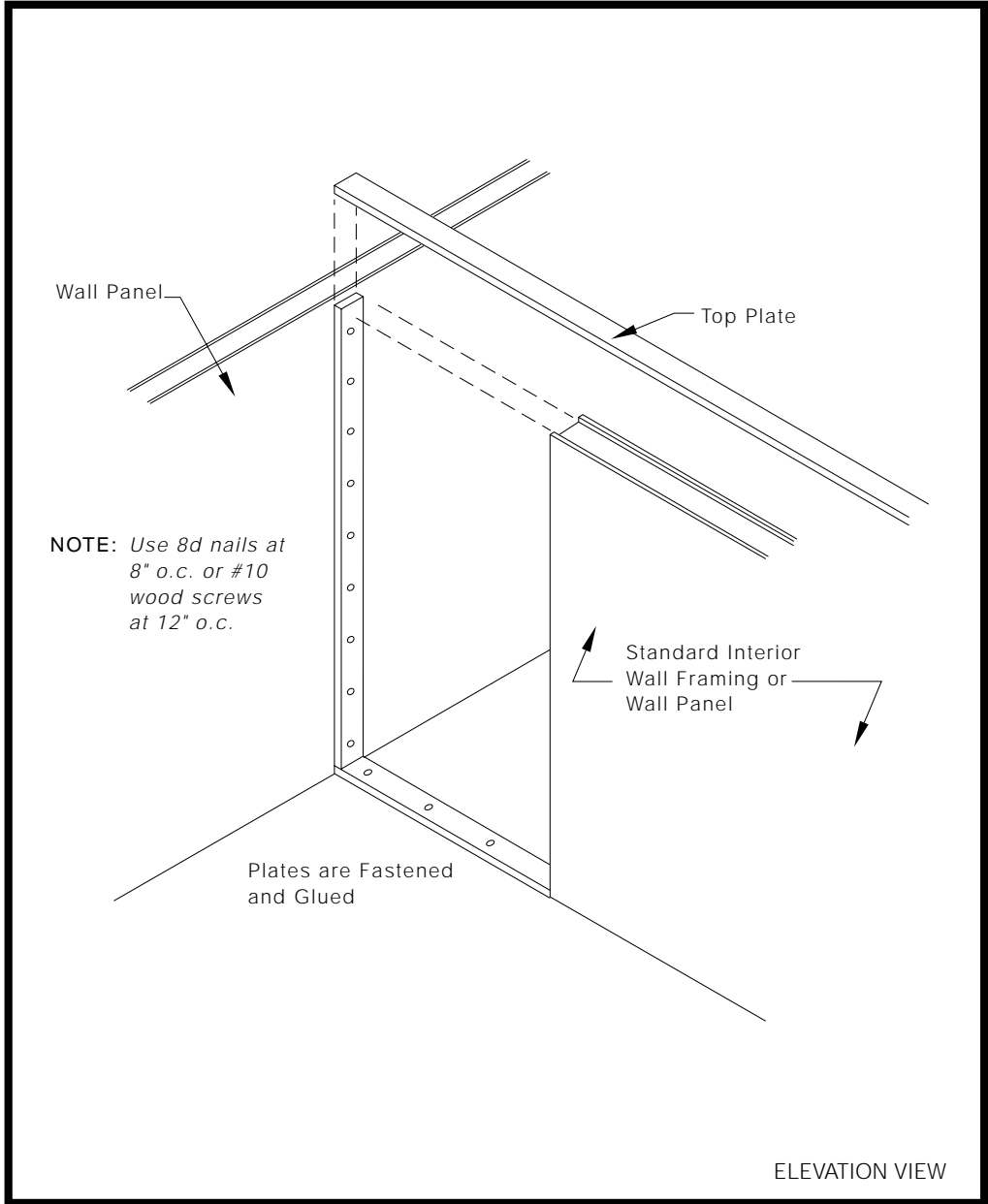
ELEVATION VIEW

**GENERAL PANEL CORP**

General Panel Corp

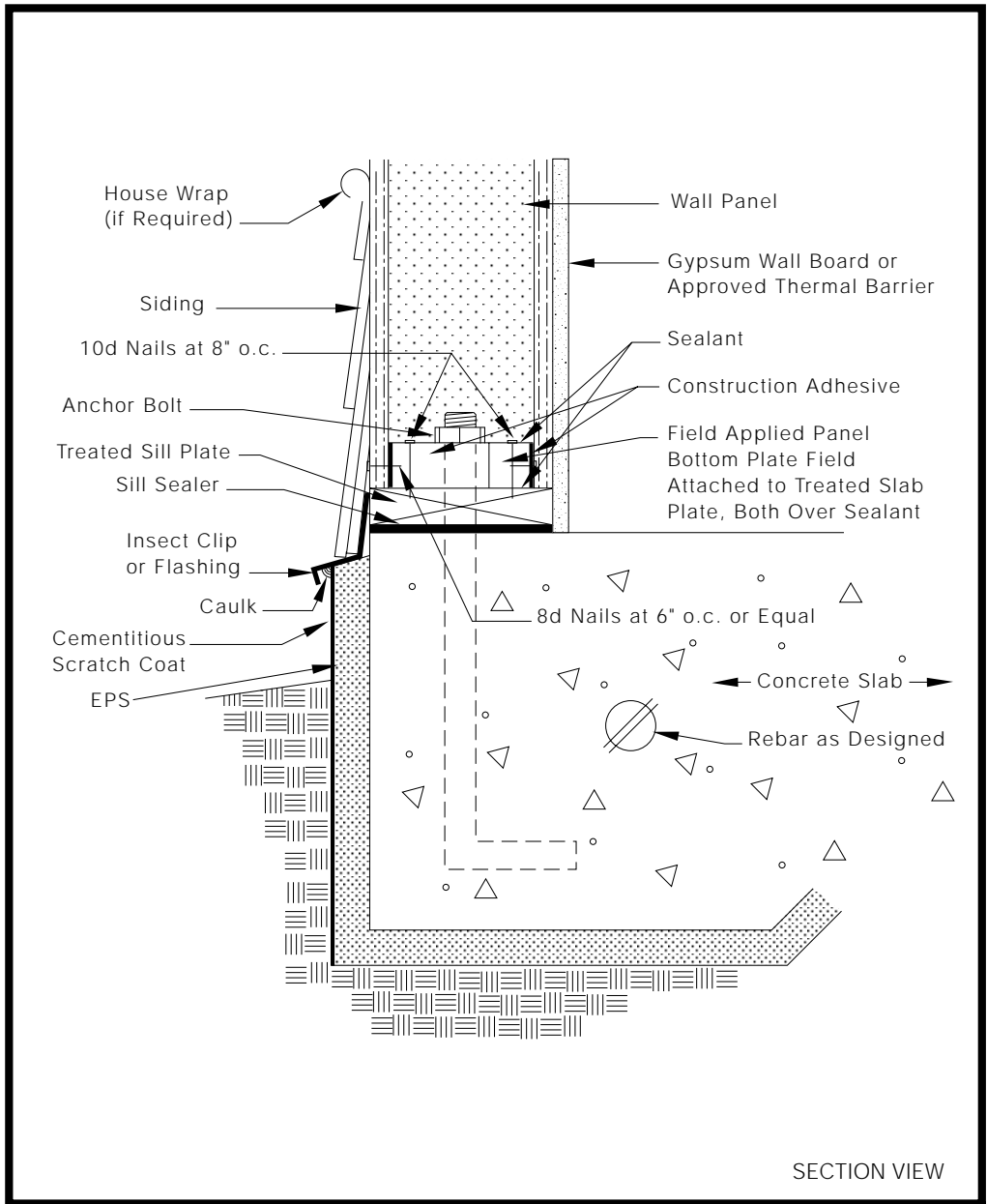
TITLE:  
Kneewall / Header Detail for 4 Bay Panels

NO.: 9



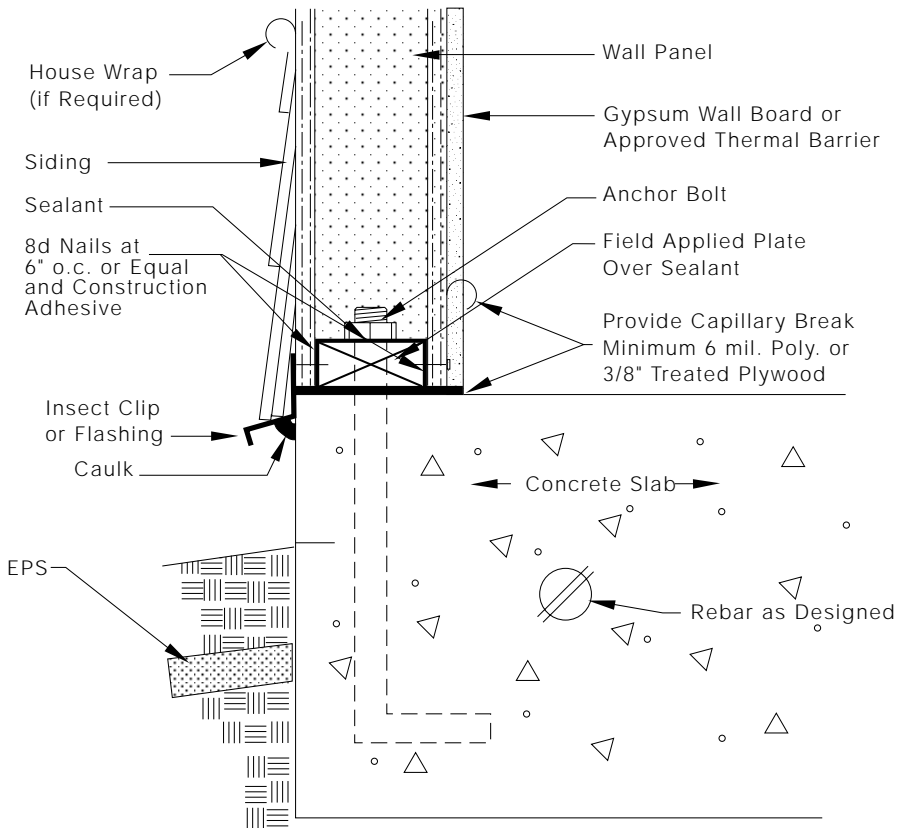
**GENERAL PANEL CORP**

General Panel Corp	
TITLE: Interior Wall Connections	NO.: <b>10</b>



**GENERAL PANEL CORP**

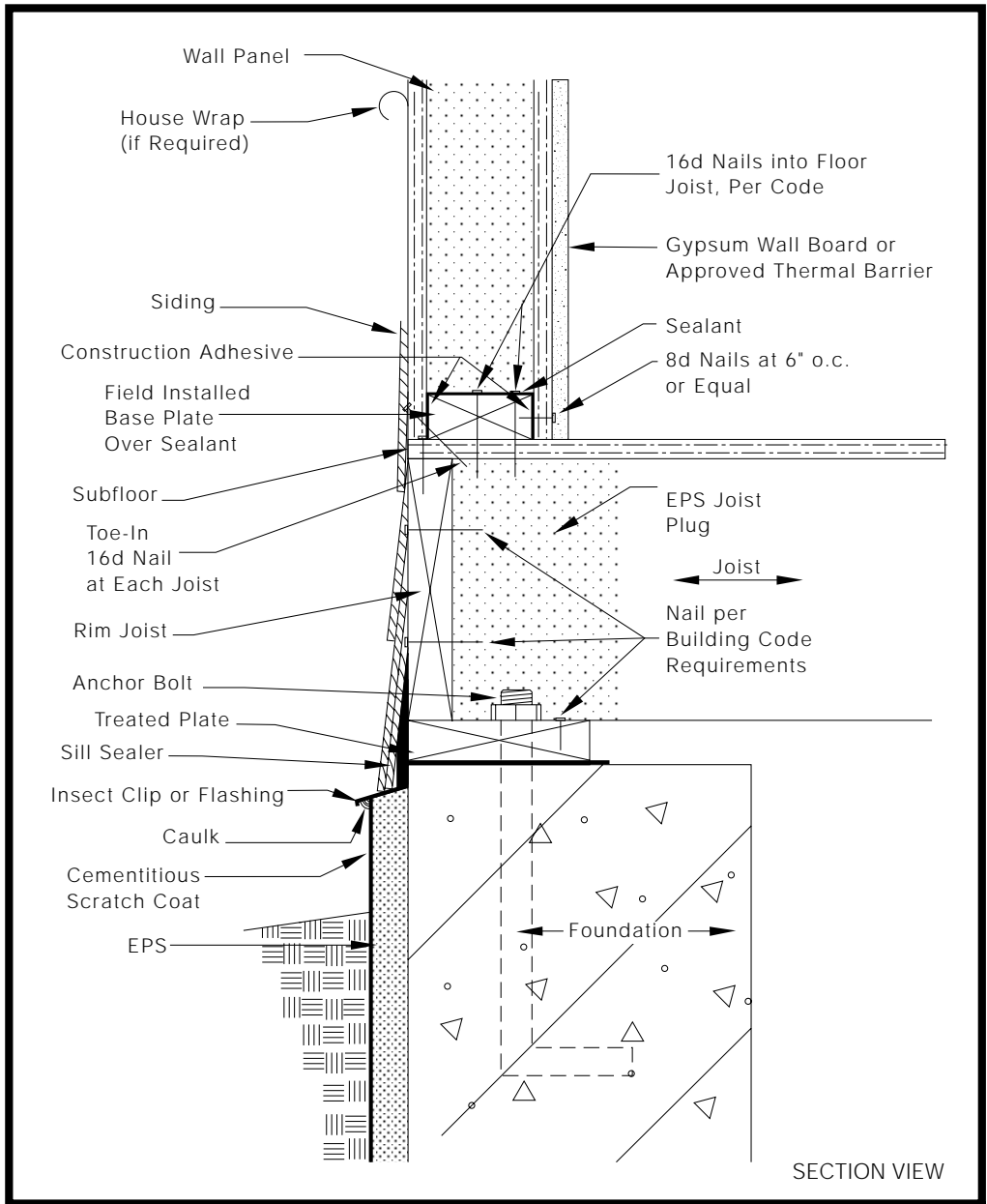
General Panel Corp	
TITLE: Wall / Insulated Slab Connection	NO.: <b>11</b>



SECTION VIEW

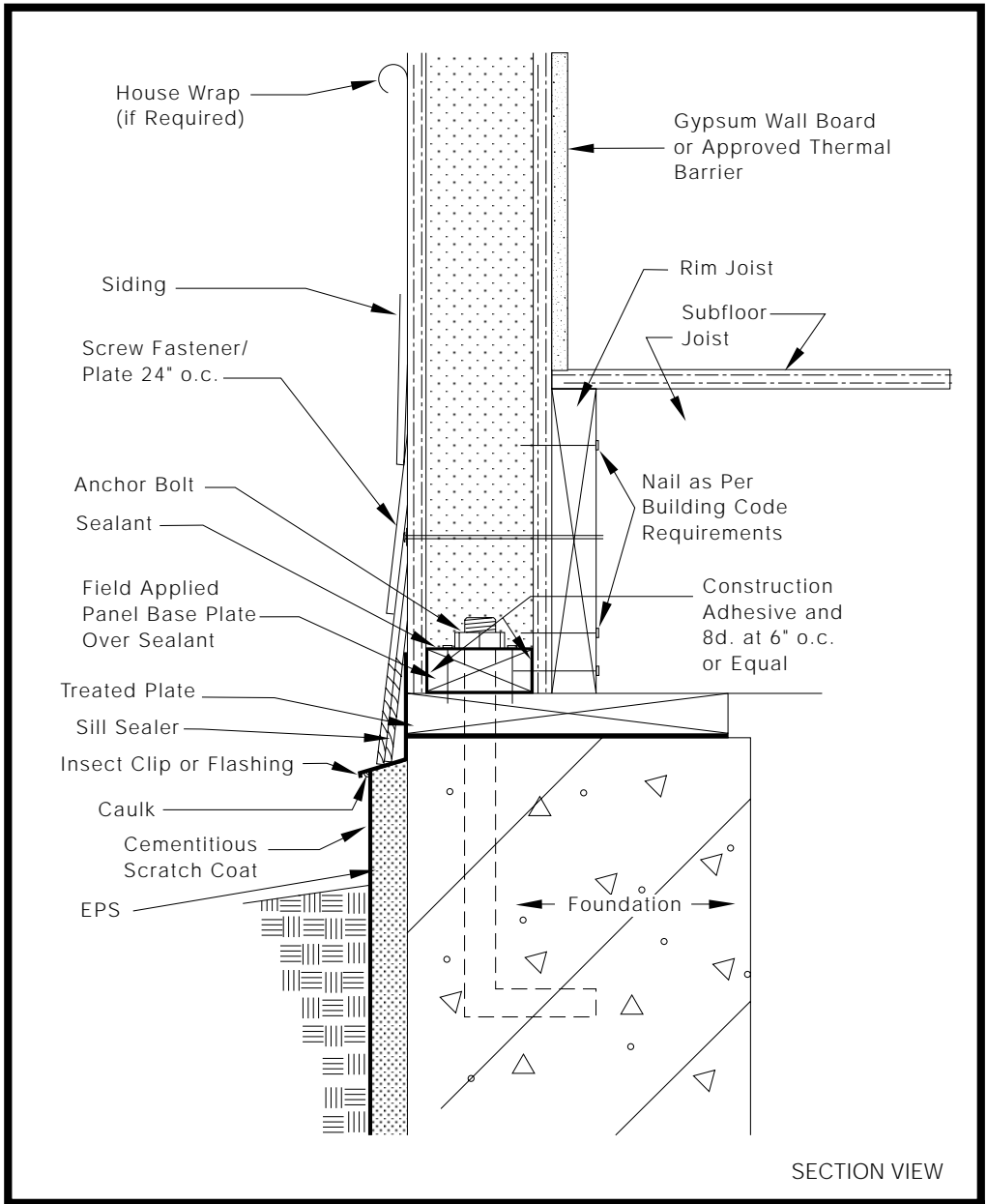
**GENERAL PANEL CORP**

General Panel Corp	
TITLE: Wall / Slab Connection	NO.: 12



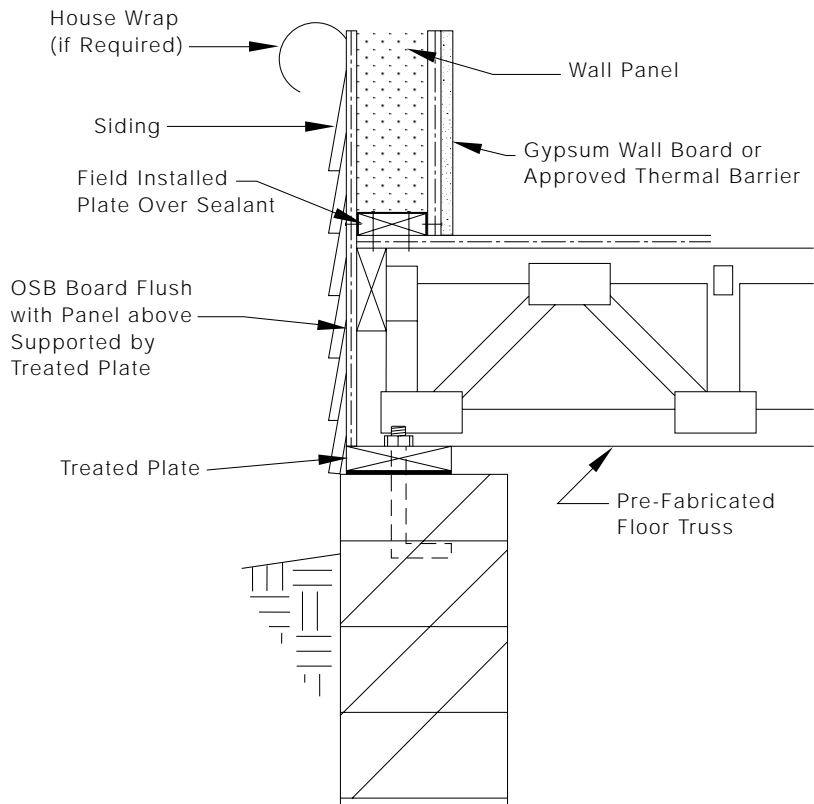
GENERAL PANEL CORP

General Panel Corp	
TITLE: Wall over Floor at Foundation	NO.: <b>13</b>



GENERAL PANEL CORP

General Panel Corp	
TITLE: Wall Outside Floor at Foundation	NO.: <b>14</b>



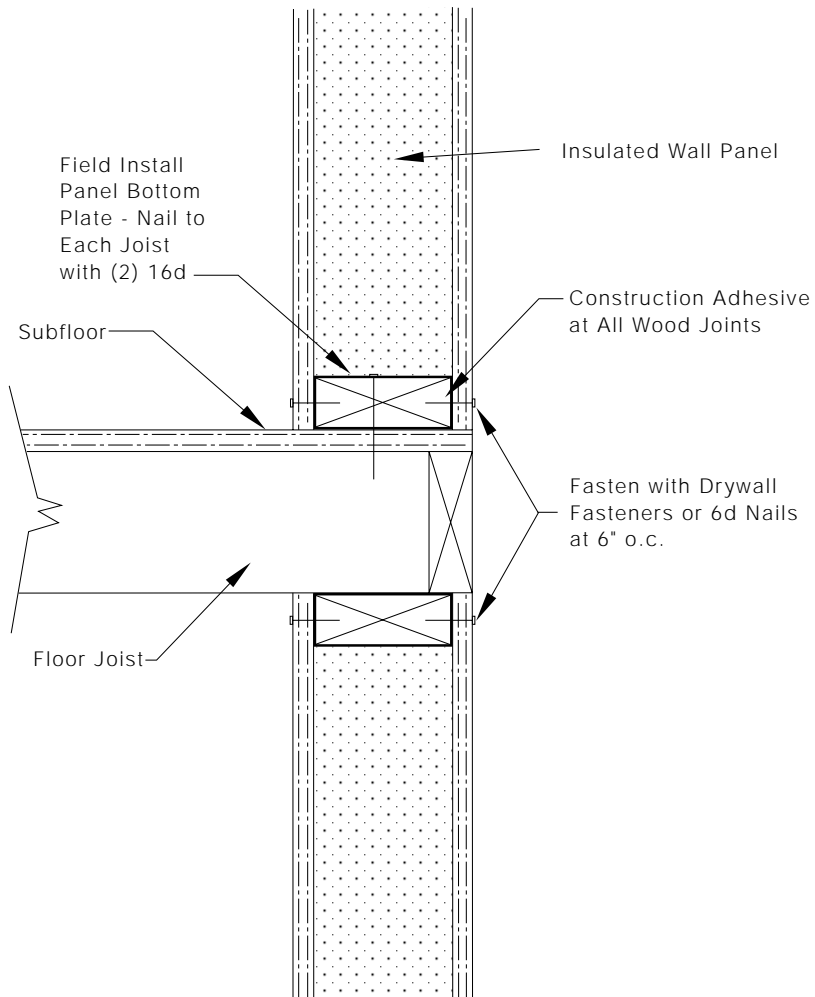
SECTION VIEW

General Panel Corp

TITLE:  
Wall Over Floor / Pre-Fab Floor Truss at Foundation

NO.: 15

GENERAL PANEL CORP



SECTION VIEW

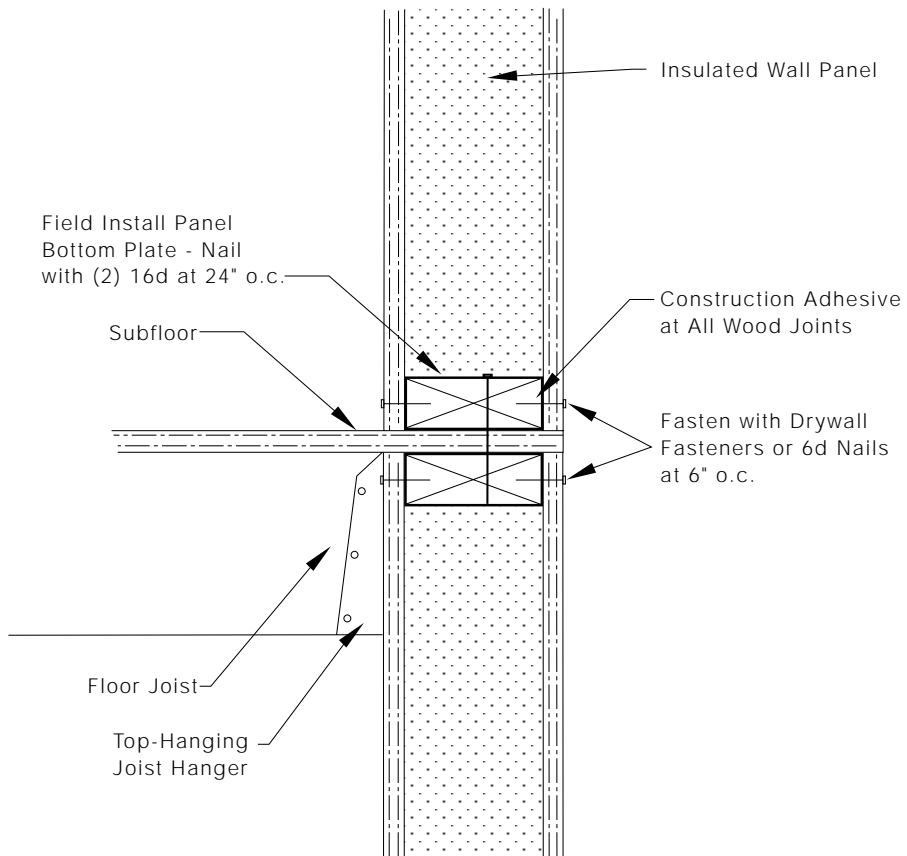
General Panel Corp

GENERAL PANEL CORP

TITLE:  
Std. Interior Floor Detail / Rolled Trusses

NO.: 16





SECTION VIEW

General Panel Corp

TITLE:  
Int. Floor Detail / Top Mounted Truss Hangers

NO.: 17

GENERAL PANEL CORP

16d Nails at 16" o.c.  
(into Floor Joists)

Toe-in 16d Nail  
at Each Joist

Subfloor

Sealant

Field Applied Panel  
Plate Over Sealant

8d Nails at  
6" o.c. or Equal  
Construction  
Adhesive

← EPS Joist Plug

← Floor Joist →

Nail per Building  
Code Requirements

Spacer Board (Optional)

8d Nails at 6" o.c.  
or Equal Construction  
Adhesive

Sealant

← Gypsum Wall Board  
or Approved Thermal  
Barrier

Varies

**NOTE:** *Precut interior wall studs to  
insulated panel wall height.*

SECTION VIEW

General Panel Corp

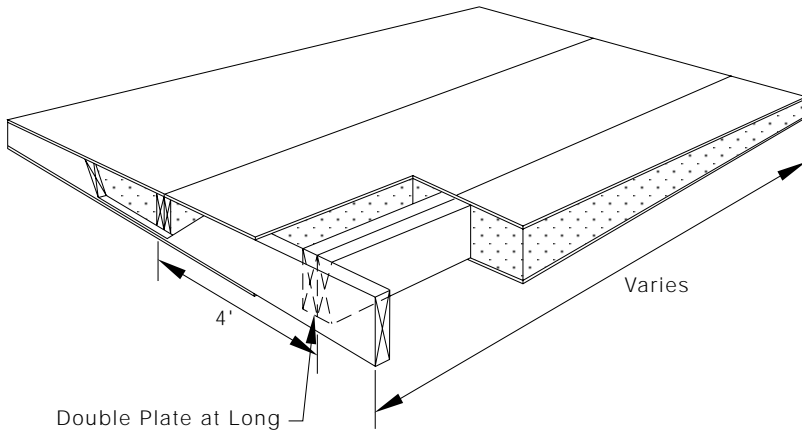
TITLE:

Interior Panel Floor Detail

NO.:

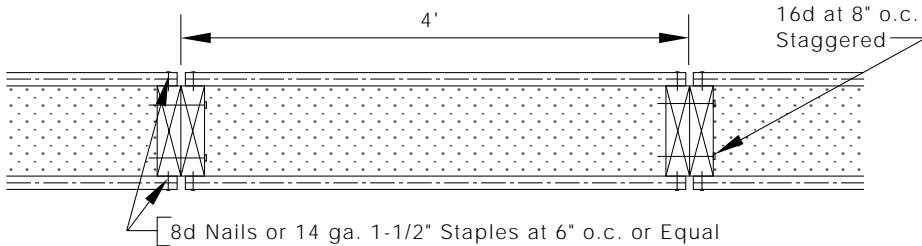
18

GENERAL PANEL CORP



Double Plate at Long Span or Approved Engineered Member

2x6, 2x8, 2x10, or 2x12 Side Members, or Approved Engineered Structural Members for Floor and Roof Panels



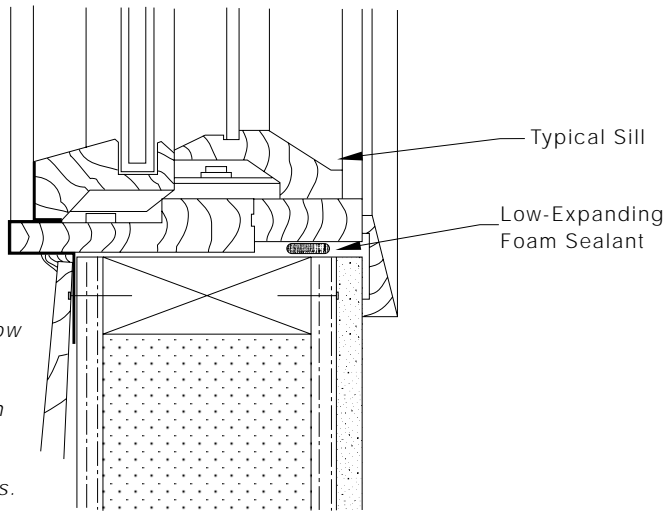
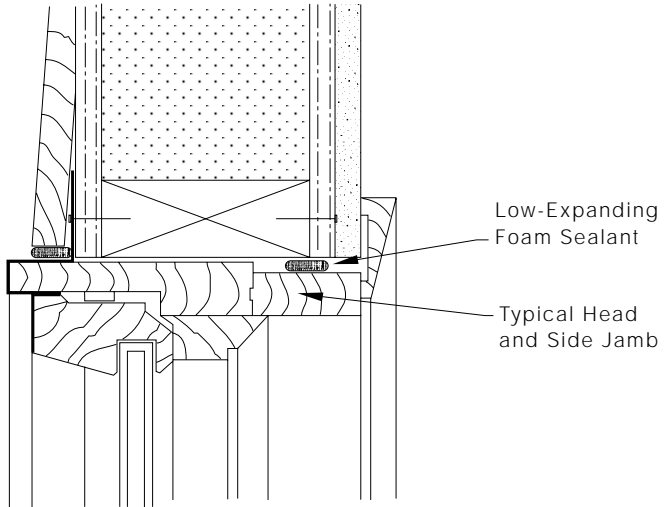
SECTION VIEW

**GENERAL PANEL CORP**

General Panel Corp

TITLE: Panel Floor Details

NO.: 19



NOTE: Shown is a typical case-ment window detail. See window manufacturer's literature for details. Fasten in accordance with manufacturer's recommendations.

SECTION VIEW

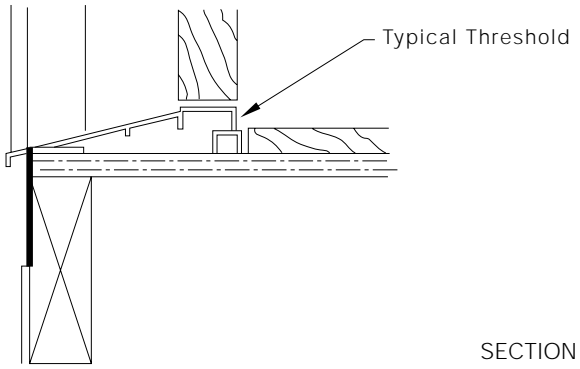
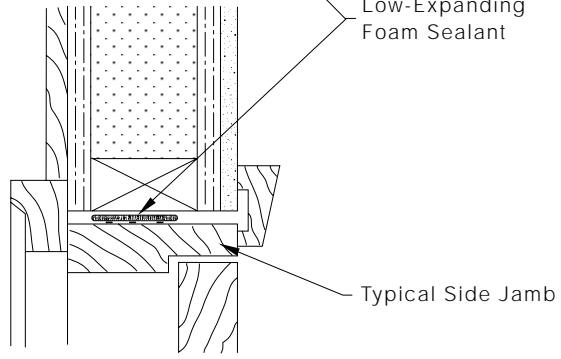
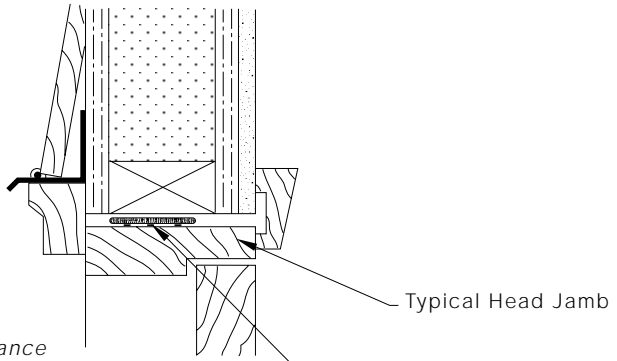
General Panel Corp

TITLE: Window Details

NO.: 20

GENERAL PANEL CORP

NOTE: Fasten in accordance  
with door manufacturer's  
recommendations.

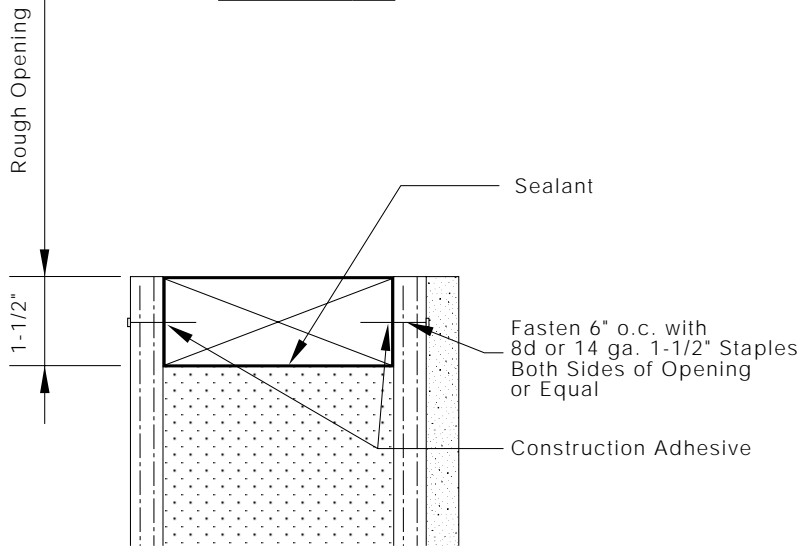
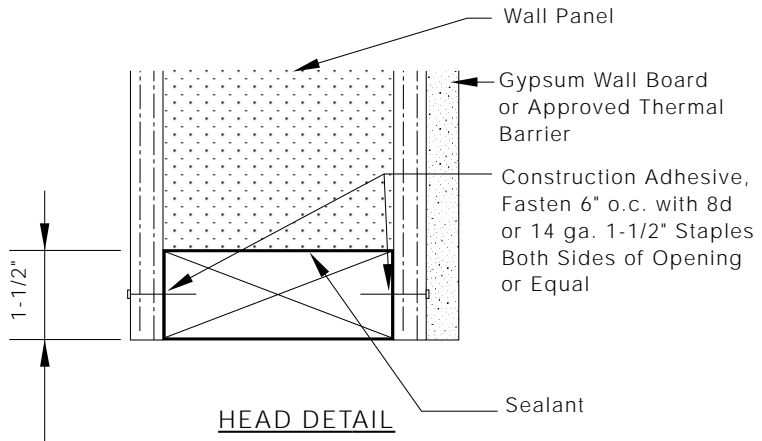


GENERAL PANEL CORP

General Panel Corp

TITLE: Door / Threshold Details

NO.: 21



1-1/2"

Rough Opening

1-1/2"

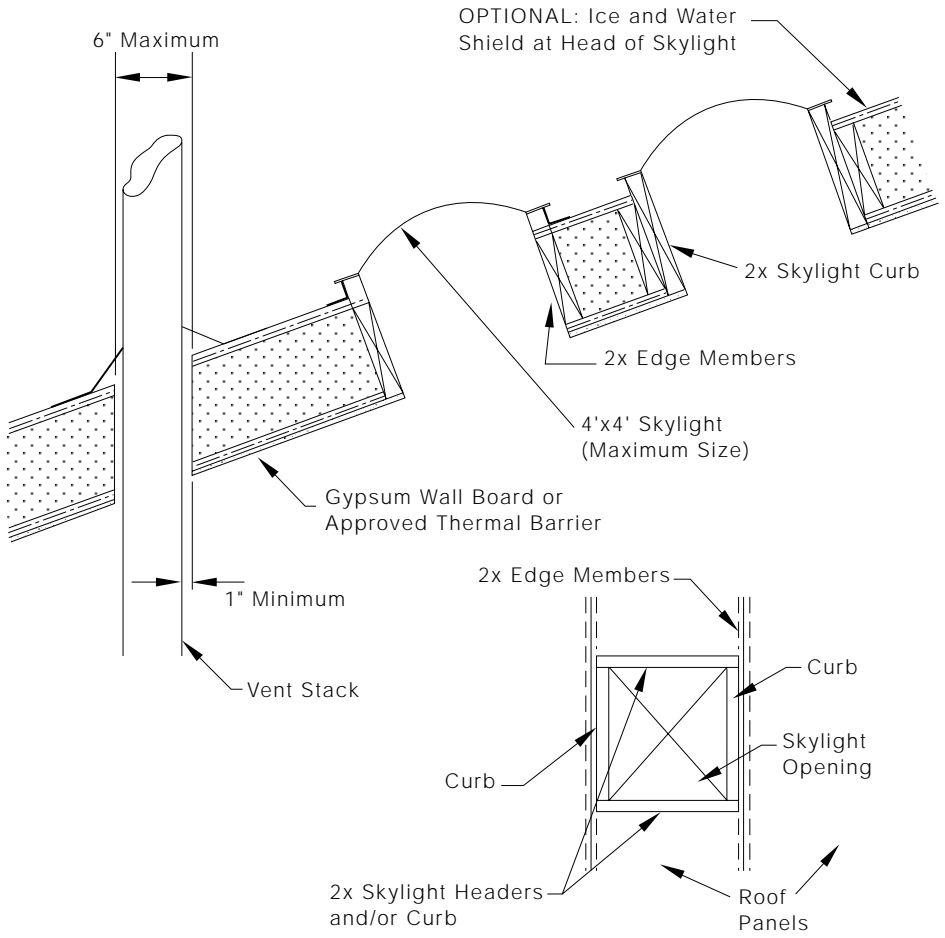
SECTION VIEW

**GENERAL PANEL CORP**

General Panel Corp

TITLE: Buck Details

NO.: 22



**NOTE:** Protect core from temperatures 160°F or above.  
 Use zero clearance insulating material designed for high temperatures as required.

Roof penetrations exceeding 6" require blocking as shown for skylights in this detail.

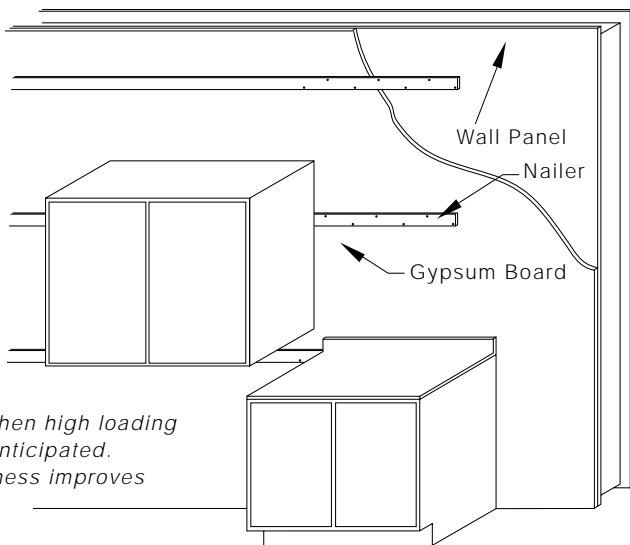
SECTION VIEW

General Panel Corp

TITLE: Skylight Details

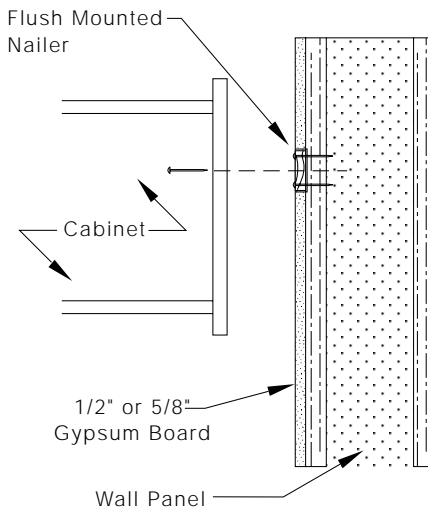
NO.: 23

GENERAL PANEL CORP



**NOTE:** *Nailer is used when high loading conditions are anticipated. Increased thickness improves fastener pullout.*

ELEVATION VIEW



**NOTE:** *Mount OSB strips (4" wide) prior to gypsum. Match gypsum board thickness.*

*Use construction adhesive and #8 wood screws at 6" o.c. staggered.*

*Place nailing strips as shown.*

*Fasten cabinets to nailing strips per cabinet manufacturer's recommendations.*

SECTION VIEW

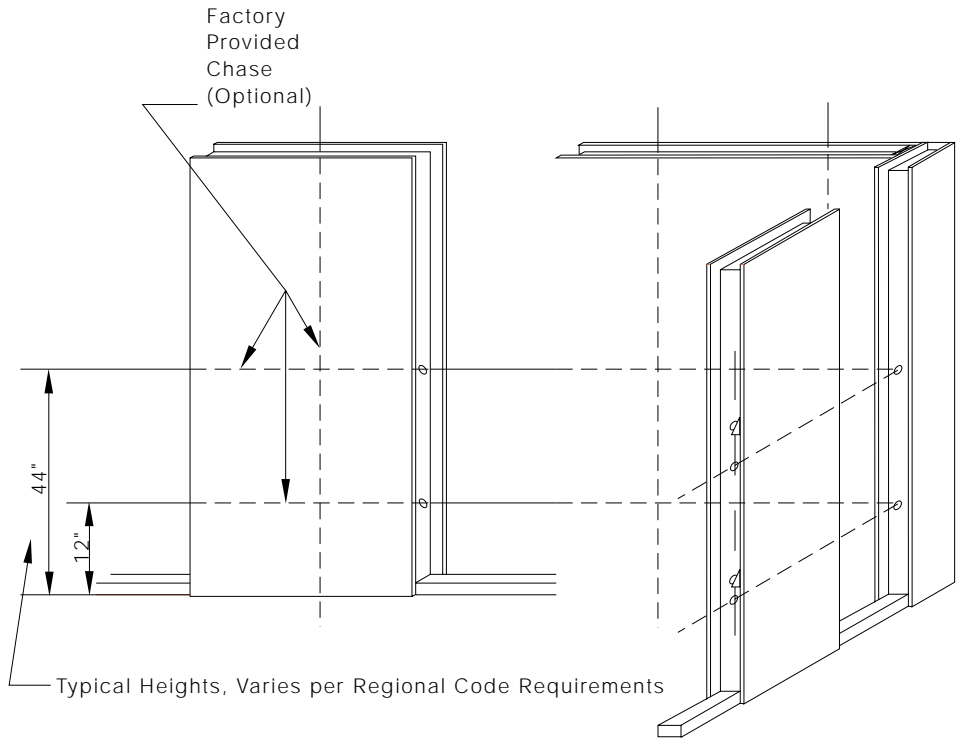
General Panel Corp

TITLE: Cabinet Mounting Details

NO.: 24

GENERAL PANEL CORP





**NOTE:** *Factory cut chases must be pre-arranged with panel manufacturer.*

*Follow local code requirements for electrical installation.*

*Field drill holes in panel plates to provide access to chase.*

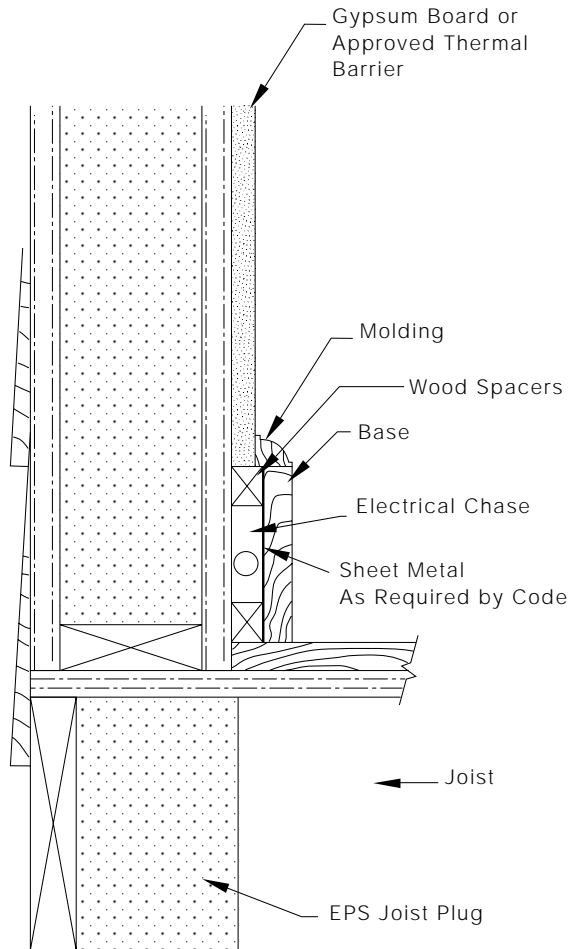
ELEVATION VIEW

**GENERAL PANEL CORP**

General Panel Corp

TITLE:  
Electrical Chase Specifications

NO.:  
25



NOTE: Follow local electrical codes.

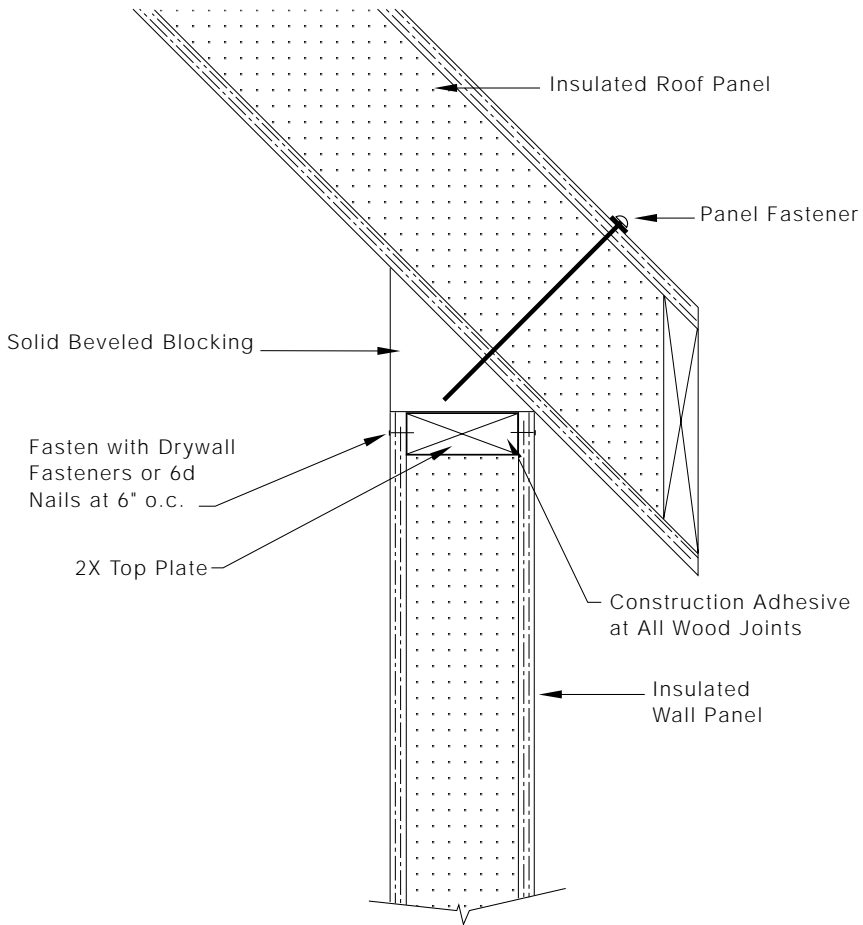
SECTION VIEW

GENERAL PANEL CORP

General Panel Corp

TITLE: Baseboard Chase Details

NO.: 26



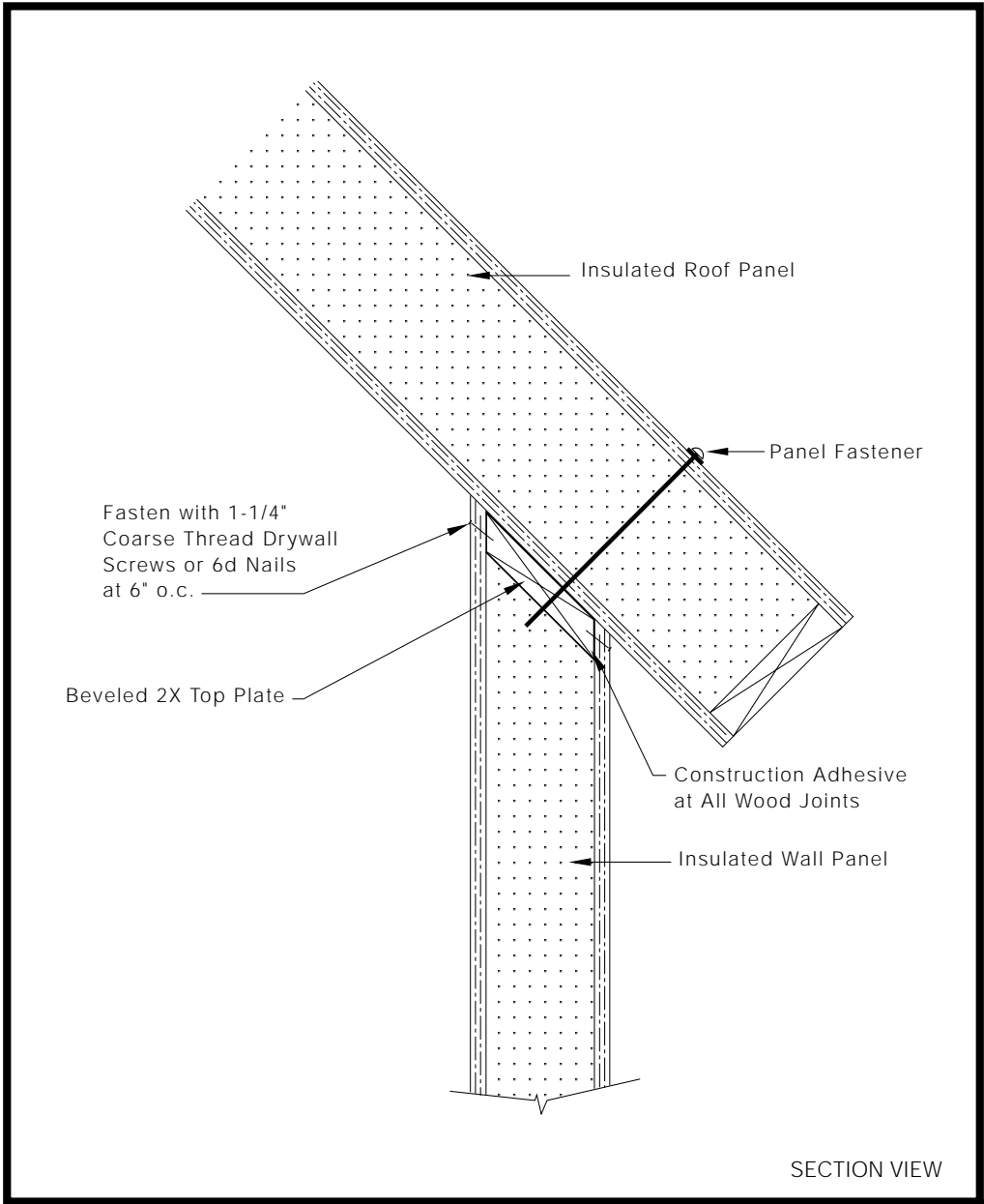
SECTION VIEW

General Panel Corp

**GENERAL PANEL CORP**

TITLE:  
Wall / Roof Attachment-Beveled Top Plate Plumb Cut Eave

NO.: **27**

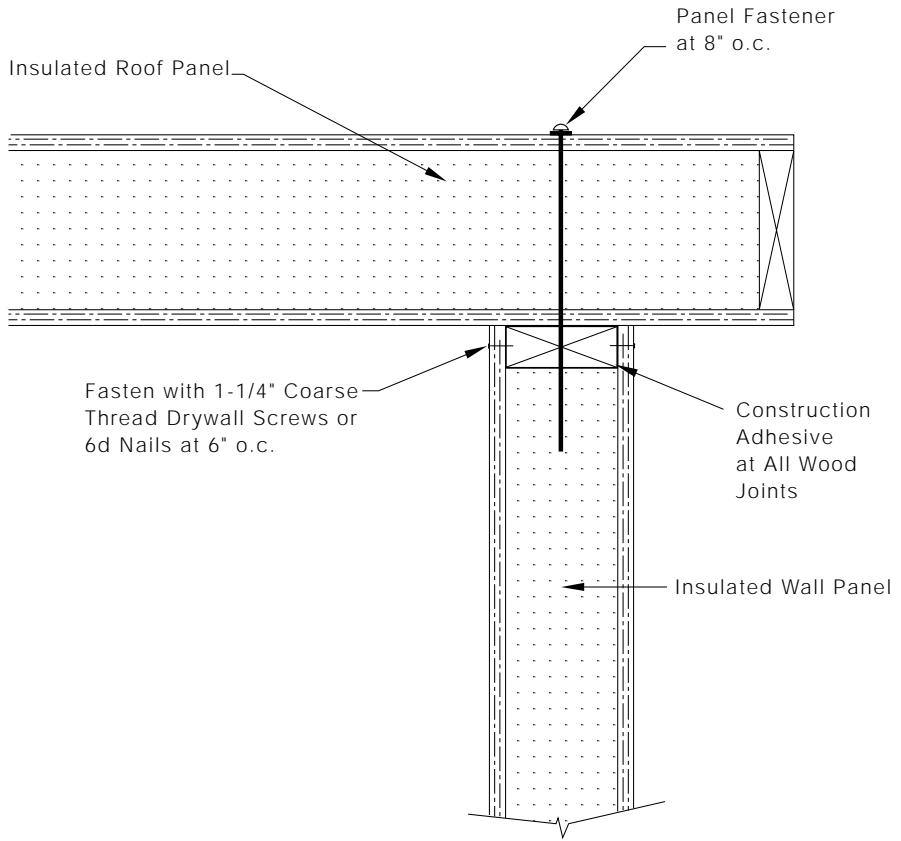


**GENERAL PANEL CORP**

General Panel Corp

TITLE:  
Wall / Roof Attachment-Beveled Panel Square Cut Eave

NO.:  
**28**



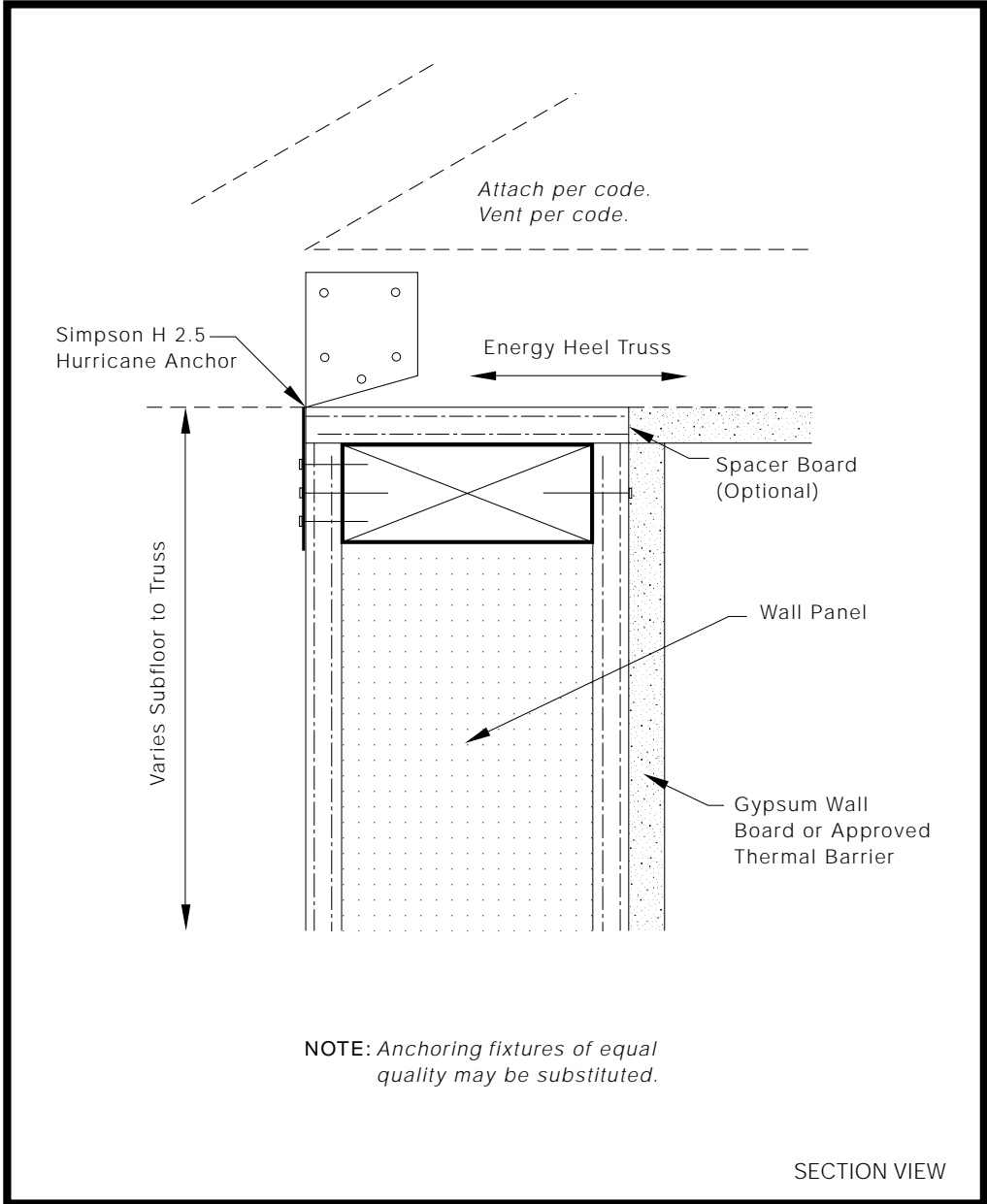
SECTION RAKE

General Panel Corp

TITLE: Wall / Roof Attachment at Rake

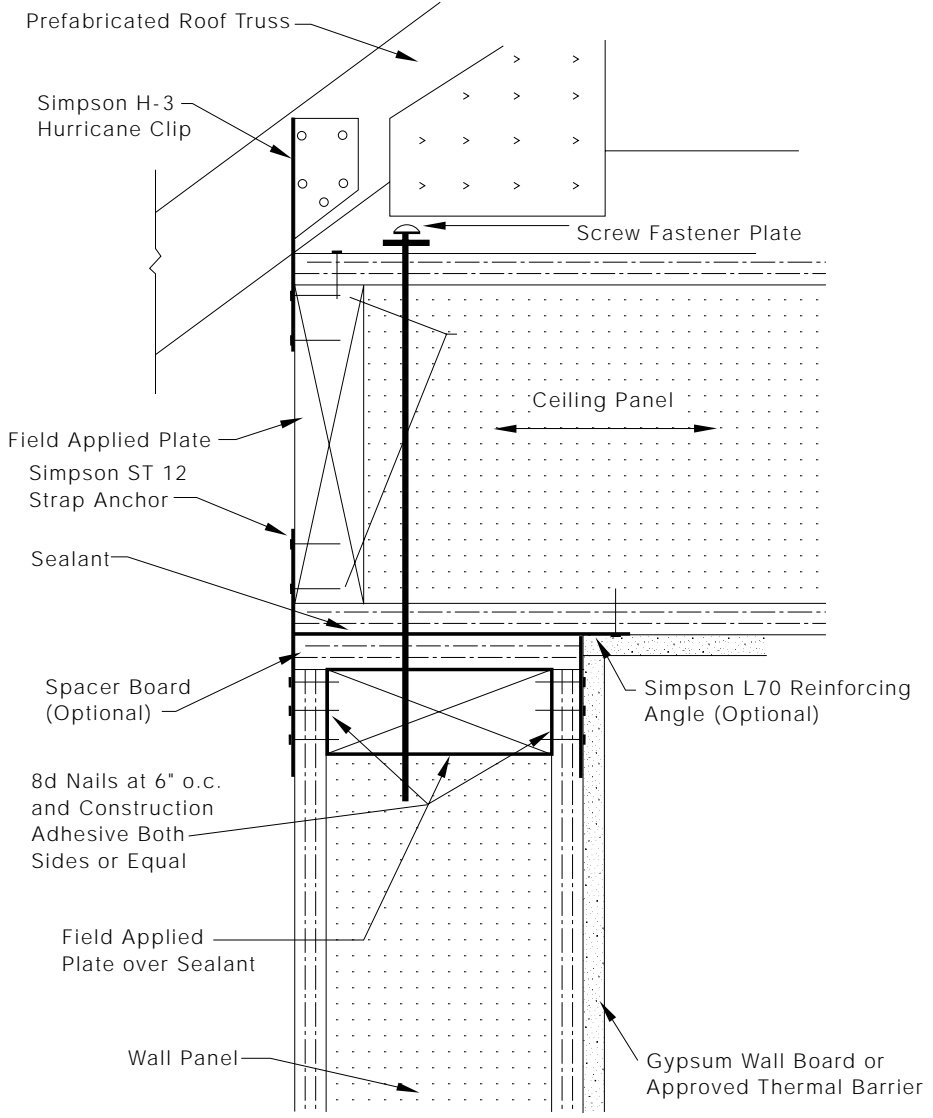
NO.: 29

GENERAL PANEL CORP



**GENERAL PANEL CORP**

General Panel Corp	
TITLE: Std. Truss Attachment at Panel Wall Top	NO.: <b>30</b>



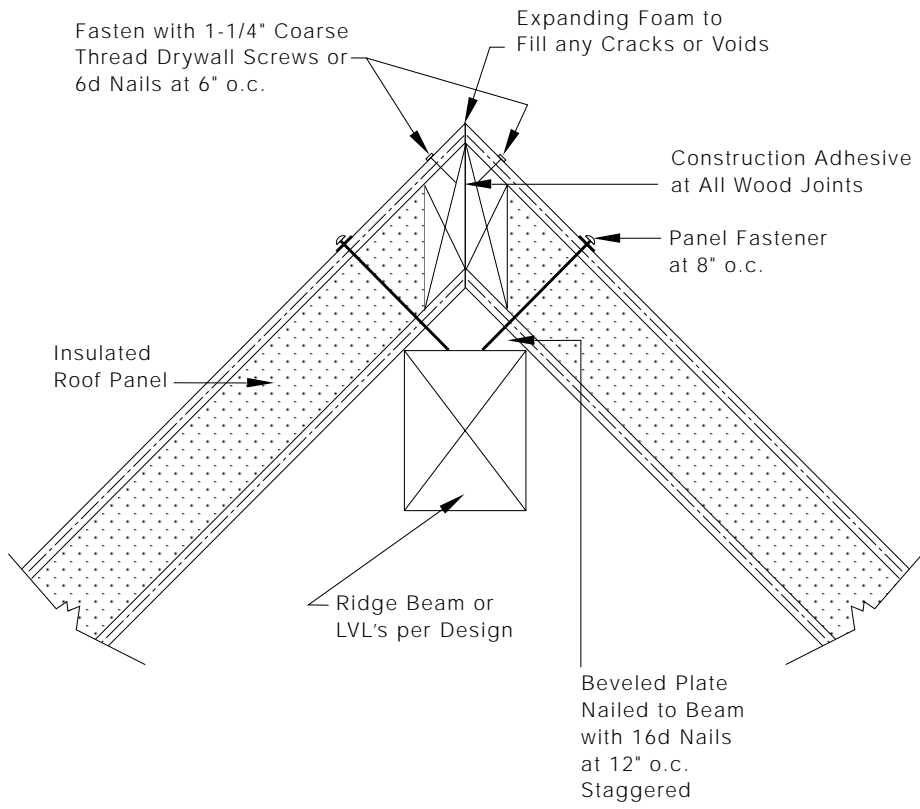
SECTION VIEW

**GENERAL PANEL CORP**

General Panel Corp

TITLE:  
Std. Truss Attachment Over Ceiling Panel

NO.: 31



SECTION VIEW

**GENERAL PANEL CORP**

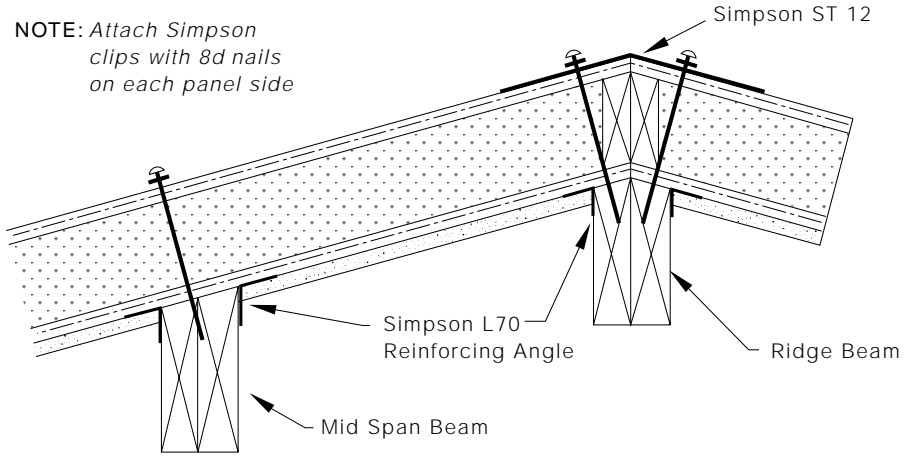
General Panel Corp

TITLE: Standard Ridge Detail

NO.: 32

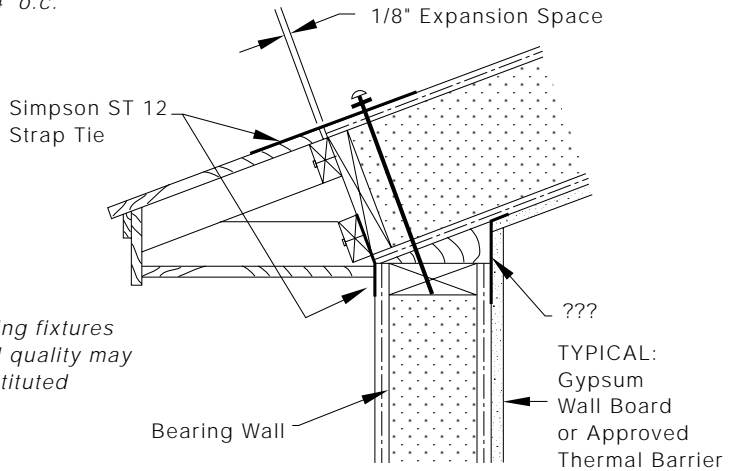


**NOTE:** Attach Simpson clips with 8d nails on each panel side



**NOTE:** Install all reinforcing metal at panel edges and/or 4' o.c.

**NOTE:** Anchoring fixtures of equal quality may be substituted



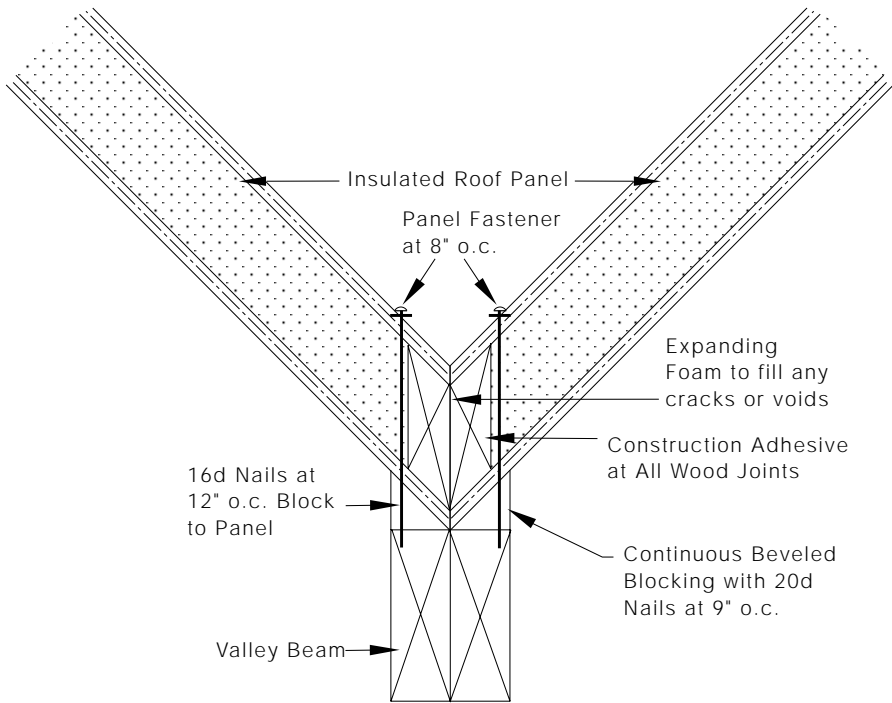
SECTION VIEW

General Panel Corp

TITLE:  
Ridge / Purlin Connections-Built Out Eave Soffit

NO.: 33

GENERAL PANEL CORP



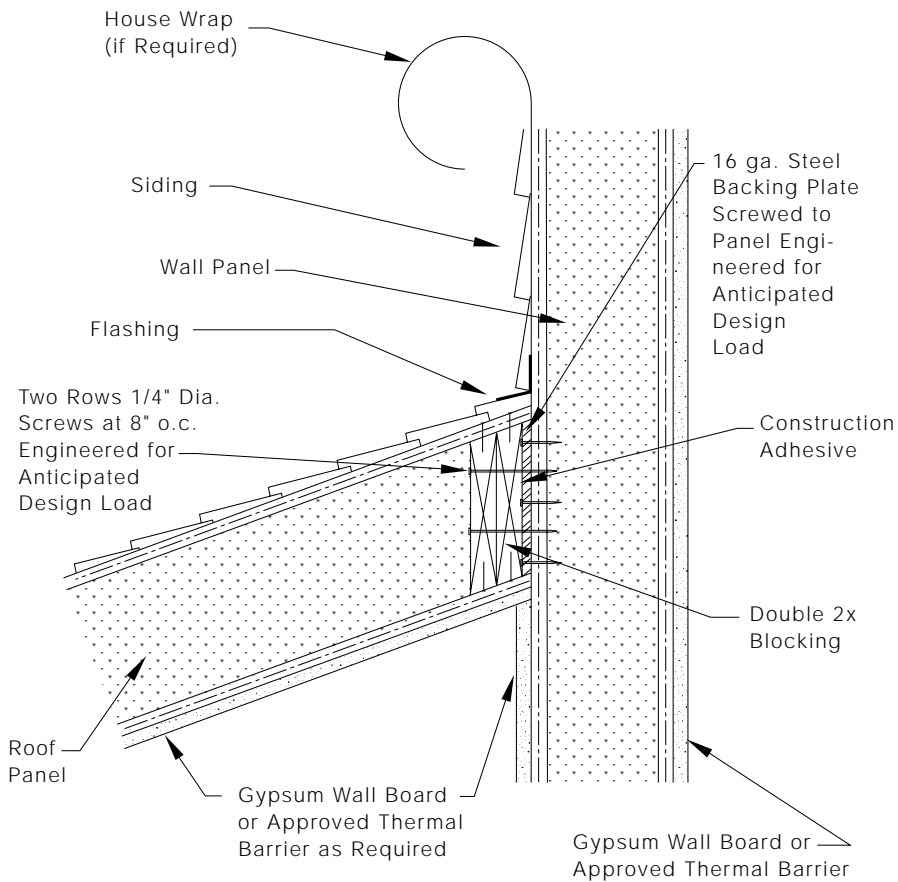
SECTION VIEW

General Panel Corp

TITLE:  
Valley Detail

NO.:  
34

GENERAL PANEL CORP



**NOTE:** Fasten 2X side members for roof panels to 2X blocking with framing angles (Simpson L 70).

SECTION VIEW

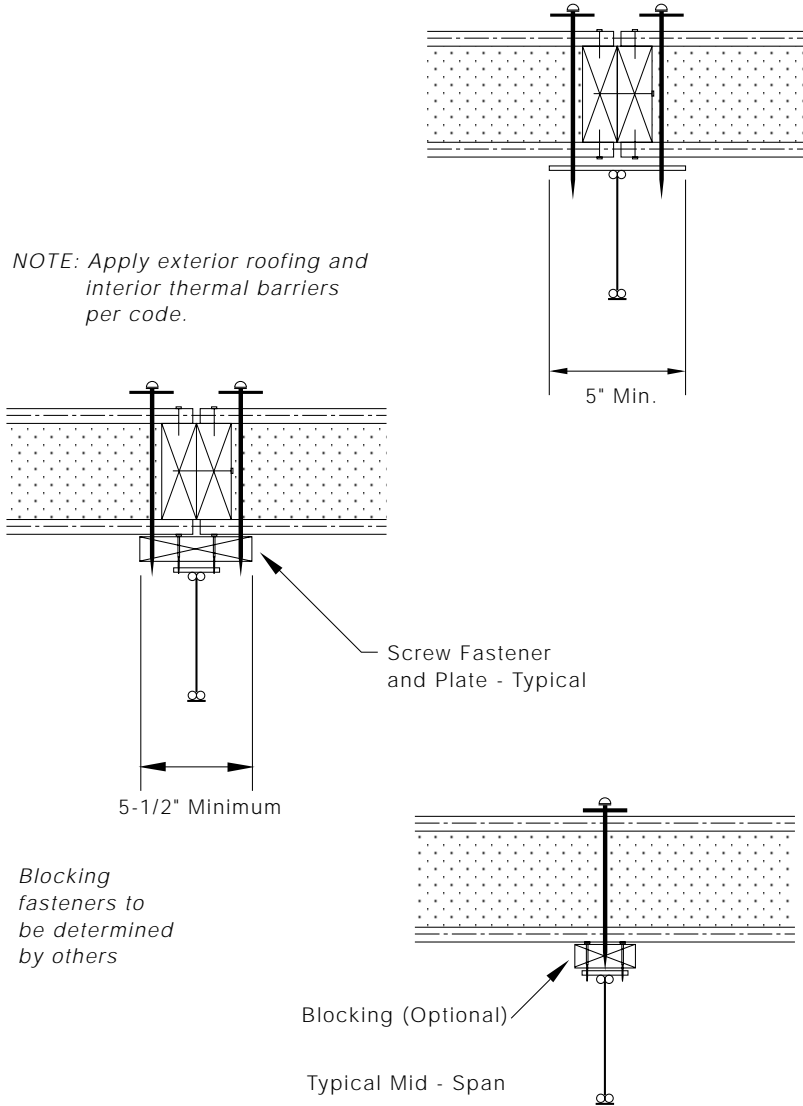
General Panel Corp

TITLE: Shed Roof Detail

NO.: 35

GENERAL PANEL CORP

NOTE: Apply exterior roofing and interior thermal barriers per code.



Blocking fasteners to be determined by others

SECTION VIEW

GENERAL PANEL CORP

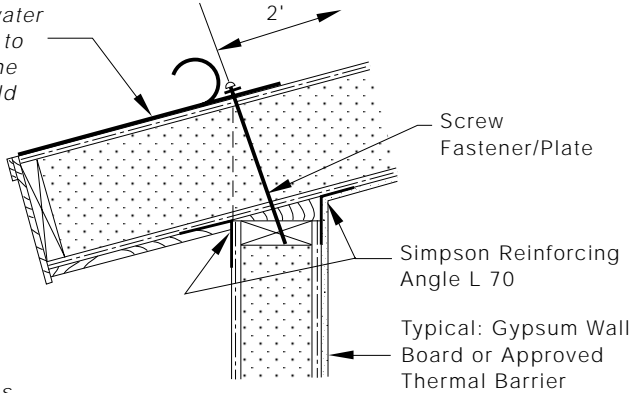
General Panel Corp

TITLE: Blocking Details

NO.: 36

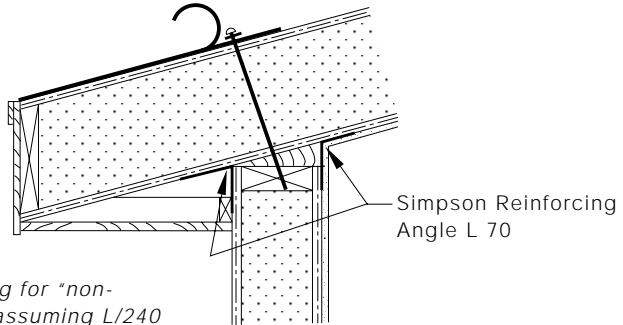
NOTE: Extend ice and water shield from fascia to 2' beyond wall line (if desired for cold region design).

SQUARE CUT



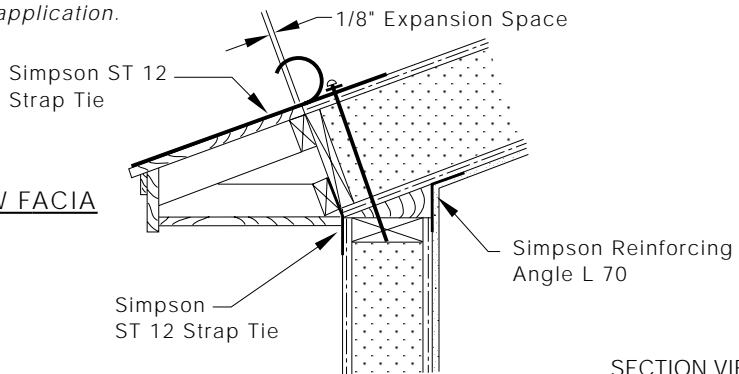
NOTE: Anchoring fixtures of equal quality may be substituted.

PLUMB CUT



NOTE: Maximum 24" overhang for "non-frame" eave designs assuming L/240 design load, or as engineered for specific application.

NARROW FACIA



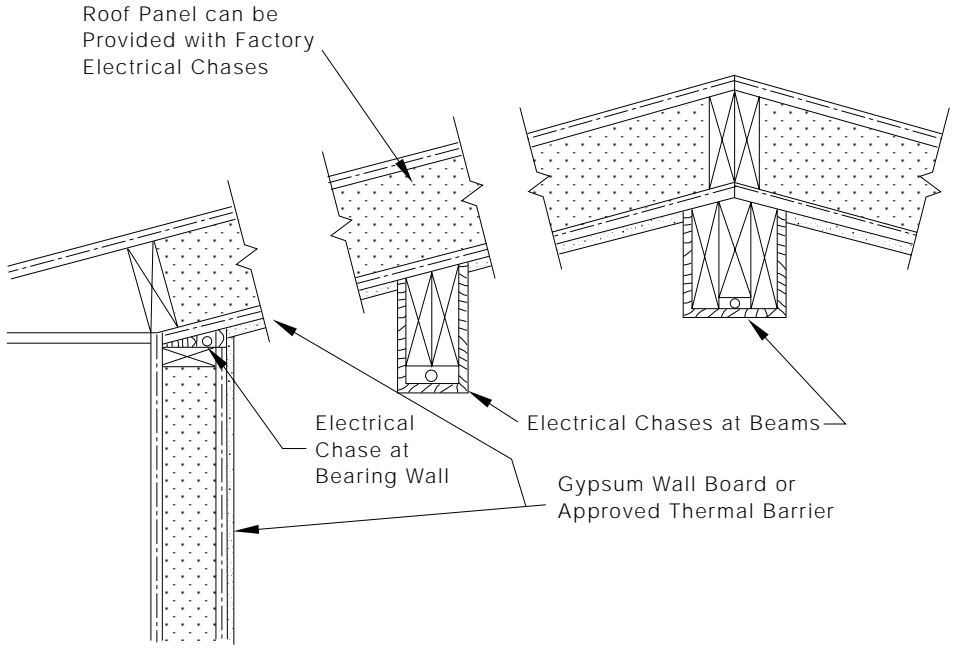
SECTION VIEW

GENERAL PANEL CORP

General Panel Corp

TITLE: Eave Details

NO.: 37



**NOTE:** Follow local building codes for conduit and wiring requirements.

SECTION VIEW

**GENERAL PANEL CORP**

General Panel Corp

TITLE: Roof Electrical Chase Details	NO.: <b>38</b>
---	-------------------